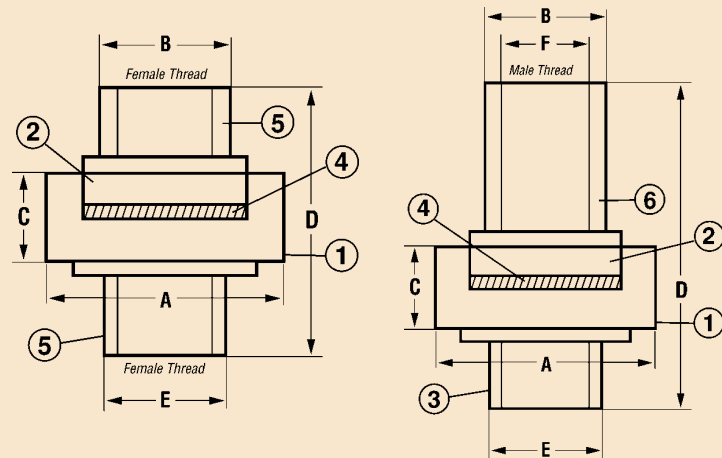


DIELECTRIC UNIONS

- Prevents Electrolysis
- Connects Dissimilar Metals
- Full Flow
- Forged Carbon Steel Nut, Zinc Plated
- Forged Carbon Steel IPS Connections, Zinc Plated
- Brass Joint Connection (209 MX Series)
- Working Pressure 300 PSI @ 150 deg. F
- High Temperature Washers Available

No.	Part	Materials Specification
①	Nut	Forged Carbon Steel ASTM A197
②	Insulator	Nylon + Fiberglass Grilon TV-3H
③	Solder Joint	Brass ASTM B-124, C37700
④	Washer	EPDM Rubber
⑤	FIP Inlet	Forged Carbon Steel ASTM A197
⑥	MIP Inlet	Forged Carbon Steel ASTM A197

• **For water use only**



209 FF SERIES

FIP X FIP DIELECTRIC UNION

Size	Fig. #	Weight	Box/Case	A	B	C	D	E
1/2"	209 FFG	0.485	10/100	1.85	1.04	0.72	2.06	1.04
3/4"	209 FFI	0.639	10/100	2.13	1.24	0.72	2.22	1.24
1"	209 FFK	1.027	5/50	2.56	1.54	0.85	2.50	1.54



209 MX SERIES

MIP X SOLD DIELECTRIC UNION

Size	Fig. #	Weight	Box/Case	A	B	C	D	E
1/2"	209 MXG	0.46	12/144	1.63	0.82	0.72	2.83	0.80
3/4" x 1/2"	209 MXIG	0.568	12/144	1.85	1.02	0.72	2.75	0.80
3/4"	209 MXI	0.577	12/144	1.85	1.02	0.72	2.92	1.04

