



SMITH-COOPER[®]

INTERNATIONAL



Cooplet[®] Weld Outlets



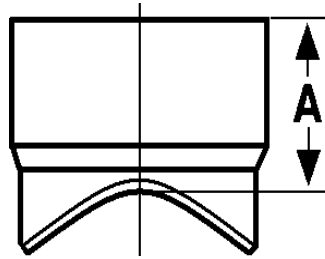
* ISO 9001:2000 MANUFACTURER
 * LISTED/APPROVED AT 300 PSI
 * LISTED/APPROVED ON FLOW PIPE, THREADABLE THINWALL, SCH. 10, SCH. 40 (SEE COMPLETE LISTING ATTACHED)

* ASTM A106
 * ANSI B 1.20.1



Female Threaded Cooplet

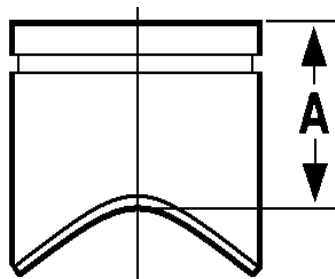
Figure 61FI



Size	A	Hole Size	Wgt/lbs.	Run Sizes Available
1/2	1.063	3/4"	0.15	1" to 1-1/2", 2" to 2-1/2", 3" to 8"
3/4	1.125	7/8"	0.20	1" to 1-1/2", 2" to 2-1/2", 2-1/2", 3" to 8"
1	1.250	1-1/8"	0.25	1-1/4" to 1-1/2", 2" to 2-1/2", 2-1/2", 3" to 4", 5" to 8"
1-1/4	1.375	1-1/2"	0.30	1-1/2", 2", 2-1/2", 3" to 4", 5" to 8"
1-1/2	1.625	1-5/8"	0.55	2", 2-1/2", 3", 4" to 5", 6" to 8"
2	1.750	2"	0.85	2-1/2", 3", 4" to 5", 6" to 8"
2-1/2	2.215	2-1/2"	1.45	3", 4" to 5", 6", 8"
3	2.500	3"	2.75	4" to 5", 6", 8"
4	3.000	4"	4.20	6", 8"

Sch. 40 Cut Grooved Cooplet

Figure 61CG



Size	A	Hole Size	Wgt/lbs.	Run Sizes Available
1-1/4	3.00	1-3/8"	0.65	1-1/2", 2", 2-1/2", 3", 4" to 5", 6", 8"
1-1/2	3.00	1-5/8"	0.65	2", 2-1/2", 3", 4" to 5", 6", 8"
2	3.00	2"	0.85	2-1/2", 3", 4" to 5", 6", 8"
2-1/2	3.00	2-1/2"	1.50	3", 4" to 5", 6", 8"
3	3.00	3"	1.90	4" to 5", 6", 8"
4	4.00	4"	3.70	6", 8"
6	4.00	6"	6.30	6", 8"
8	4.00	8"	11.0	8"

SIZE-ON-SIZE GROOVED OUTLETS AVAILABLE, NOT LISTED OR APPROVED

SMITH-COOPER®

INTERNATIONAL

2867 Vail Avenue, Commerce, CA 90040

Phone: 323-890-4455

Fax: 323-890-4456

SCI Cooplerts are UL Listed, FM Approved for use on the following types of sprinkler pipe:

- Dyna-Thread®** steel sprinkler pipe manufactured by Allied Tube and Conduit Corp.
- Central-Thread®** steel sprinkler pipe manufactured by Allied Tube and Conduit Corp.
- XL-II®** steel sprinkler pipe manufactured by Allied Tube and Conduit Corp.
- Dyna-Flow®** steel sprinkler pipe manufactured by Allied Tube and Conduit Corp.
- Super 40®** steel sprinkler pipe manufactured by Allied Tube and Conduit Corp.
- Super-Flow®** steel sprinkler pipe manufactured by Allied Tube and Conduit Corp.
- TL®** steel sprinkler pipe manufactured by Allied Tube and Conduit Corp.
- Central 7®** steel sprinkler pipe manufactured by Allied Tube and Conduit Corp.
- BLT®** steel sprinkler pipe manufactured by Allied Tube and Conduit Corp.
- Eddylite®** steel sprinkler pipe manufactured by Bull Moose Tube Co.
- Eddy Flow®** steel sprinkler pipe manufactured by Bull Moose Tube Co.
- Eddy Thread 40®** steel sprinkler pipe manufactured by Bull Moose Tube Co.
- EZ-Flow®** steel sprinkler pipe manufactured by Northwest Pipe & Casing Co.
- WLS®** steel sprinkler pipe manufactured by Wheatland Tube Company.
- Mega-Flow®** steel sprinkler pipe manufactured by Wheatland Tube Company.
- MLT®** steel sprinkler pipe manufactured by Wheatland Tube Company.
- Steady Flow®** steel sprinkler pipe manufactured by AMS Tube Corp.
- Steady Thread®** steel sprinkler pipe manufactured by AMS Tube Corp.
- Fire-Flow®** steel sprinkler pipe manufactured by Youngstown Tube Co.
- EZ-Thread®** steel sprinkler pipe manufactured by Youngstown Tube Co.
- Fire Line Flow®** steel sprinkler pipe manufactured by Western International Forest Products Inc.
- Rapid Thread®** steel sprinkler pipe manufactured by Western International Forest Products Inc.
- Rapid-Thread®** steel sprinkler pipe manufactured by Western International Forest Products Inc.
- Tex-Flow®** steel sprinkler pipe manufactured by Tex-Tube International
- Schedule 10** steel sprinkler pipe made by any manufacturer
- Schedule 40** steel sprinkler pipe made by any manufacturer