



SMITH - COOPER INTERNATIONAL



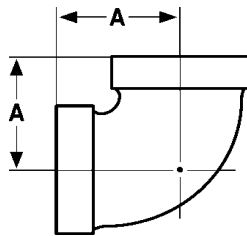
Cast Iron Threaded Fittings

* ALL FITTINGS 100% AIR TESTED
* ISO 9001:2000 MANUFACTURER
* LISTED/APPROVED AT 300 PSI

* ANSI B16.4
* ASTM A126
* ANSI B 1.20.1

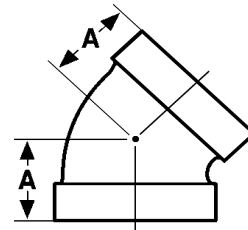


Cast Iron 90° Elbow Figure 37E



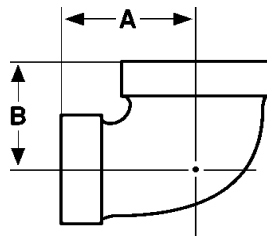
Size	A	Wgt/lbs.
1/2	1.26	0.40
3/4	1.31	0.60
1	1.50	0.92
1-1/4	1.75	1.44
1-1/2	1.94	1.95
2	2.25	3.13
2-1/2	2.70	4.94

Cast Iron 45° Elbow Figure 37F



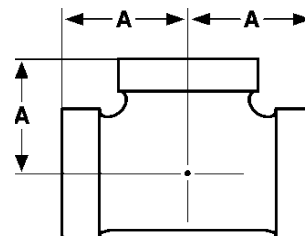
Size	A	Wgt/lbs.
1	1.26	0.83
1-1/4	1.29	1.33
1-1/2	1.44	1.79
2	1.69	2.89

Cast Iron Reducing 90° Elbow Figure 37RE



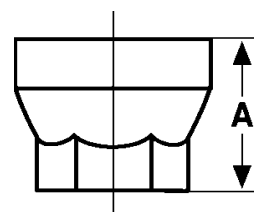
Size	A	B	Wgt/lbs.
1 x 1/2	1.36	1.26	0.67
1 x 3/4	1.45	1.38	0.76
1-1/4 x 1/2	1.53	1.34	1.07
1-1/4 x 3/4	1.63	1.45	1.02
1-1/4 x 1	1.67	1.58	1.21
1-1/2 x 1/2	1.75	1.52	1.53
1-1/2 x 3/4	1.75	1.52	1.55
1-1/2 x 1	1.80	1.65	1.44
1-1/2 x 1-1/4	1.88	1.82	1.74
2 x 1/2	1.97	1.60	2.22
2 x 3/4	1.97	1.60	2.20
2 x 1	2.02	1.73	2.08
2 x 1-1/2	2.16	2.02	2.59

Cast Iron Tee Figure 37T



Size	A	Wgt/lbs.
1/2	1.13	0.56
3/4	1.31	0.84
1	1.50	1.25
1-1/4	1.75	2.03
1-1/2	1.94	2.70
2	2.25	4.23

Cast Iron Hex Reducing Coupling Figure 37RC



Size	A	Wgt/lbs.
1 x 1/2	1.69	0.54
1 x 3/4	1.69	0.63
2 x 1(not hex)	2.81	1.83



SMITH - COOPER INTERNATIONAL

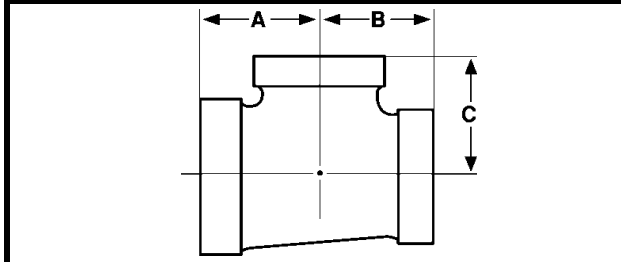


Cast Iron Threaded Fittings

* ALL FITTINGS 100% AIR TESTED * ANSI B16.4
 * ISO 9001:2000 MANUFACTURER * ASTM A126
 * LISTED/APPROVED AT 300 PSI * ANSI B 1.20.1



Cast Iron Reducing Tee Figure 37RT

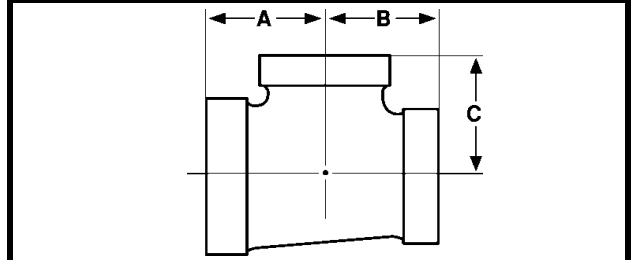


Size	A	B	C	Wgt.
1 x 1/2 x 1	1.50	1.36	1.50	1.08
1 x 3/4 x 1	1.50	1.45	1.50	1.13
1 x 1 x 1/2	1.26	1.26	1.36	1.01
1 x 1 x 3/4	1.38	1.38	1.45	1.11
1-1/4 x 1/2 x 1-1/4	1.75	1.53	1.75	1.64
1-1/4 x 3/4 x 1-1/4	1.75	1.62	1.75	1.73
1-1/4 x 1 x 1/2	1.34	1.26	1.53	1.27
1-1/4 x 1 x 3/4	1.45	1.38	1.63	1.36
1-1/4 x 1 x 1	1.58	1.50	1.69	1.53
1-1/4 x 1 x 1-1/4	1.75	1.69	1.75	1.79
1-1/4 x 1-1/4 x 1/2	1.34	1.34	1.53	1.47
1-1/4 x 1-1/4 x 3/4	1.45	1.45	1.62	1.57
1-1/4 x 1-1/4 x 1	1.58	1.58	1.67	1.73
1-1/2 x 1/2 x 1-1/4	1.81	1.56	1.88	1.93
1-1/2 x 1/2 x 1-1/2	1.94	1.66	1.94	2.14
1-1/2 x 3/4 x 1-1/4	1.94	1.66	1.88	2.11
1-1/2 x 3/4 x 1-1/2	1.94	1.75	1.94	2.18
1-1/2 x 1 x 1/2	1.44	1.25	1.69	1.75
1-1/2 x 1 x 3/4	1.50	1.44	1.75	1.70
1-1/2 x 1 x 1	1.65	1.50	1.80	1.72
1-1/2 x 1 x 1-1/4	1.82	1.67	1.88	2.08
1-1/2 x 1 x 1-1/2	1.94	1.80	1.94	2.29
1-1/2 x 1-1/4 x 1/2	1.41	1.34	1.66	1.67
1-1/2 x 1-1/4 x 3/4	1.52	1.45	1.75	1.79
1-1/2 x 1-1/4 x 1	1.65	1.58	1.80	1.97
1-1/2 x 1-1/4 x 1-1/4	1.82	1.75	1.88	2.28
1-1/2 x 1-1/4 x 1-1/2	1.94	1.88	1.94	2.50
1-1/2 x 1-1/2 x 1/2	1.41	1.41	1.66	1.84

Cast Iron Reducing Tee Con't Figure 37RT

Size	A	B	C	Wgt.
1-1/2 x 1-1/2 x 3/4	1.52	1.52	1.75	1.95
1-1/2 x 1-1/2 x 1	1.65	1.65	1.80	2.13
1-1/2 x 1-1/2 x 1-1/4	1.82	1.82	1.88	2.44
2 x 1 x 2	2.25	2.02	2.25	3.46
2 x 1-1/4 x 2	2.25	2.10	2.25	3.71
2 x 1-1/2 x 1/2	1.49	1.41	1.88	2.34
2 x 1-1/2 x 3/4	1.60	1.52	1.97	2.46
2 x 1-1/2 x 1	1.73	1.65	2.02	2.66
2 x 1-1/2 x 1-1/4	1.90	1.82	2.10	2.98
2 x 1-1/2 x 1-1/2	2.02	1.94	2.16	3.24
2 x 1-1/2 x 2	2.25	2.16	2.25	3.70
2 x 2 x 1/2	1.49	1.49	1.88	2.74
2 x 2 x 3/4	1.60	1.60	1.97	2.86
2 x 2 x 1	1.73	1.73	2.02	3.05
2 x 2 x 1-1/4	1.90	1.90	2.10	3.38
2 x 2 x 1-1/2	2.02	2.02	2.16	3.59

Cast Iron Bull Head Tee Figure 37BT



Size	A	B	C	Wgt.
1 x 1 x 1-1/4	1.67	1.67	1.58	1.49
1-1/4 x 1 x 1-1/2	1.88	1.80	1.82	2.07
1-1/4 x 1-1/4 x 1-1/2	1.88	1.88	1.82	2.29
1-1/2 x 1-1/4 x 2	2.16	2.10	2.02	3.07
1-1/2 x 1-1/2 x 2	2.16	2.16	2.02	3.23
2 x 2 x 2-1/2	2.60	2.60	2.39	5.17

All Weights in Pounds