

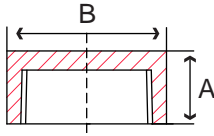


Bar Stock Fittings

Specifications

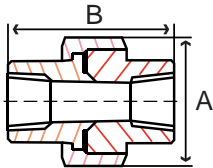
- Stainless bar stock dimensions conform to MSS SP-114
- NPT threads conform to ASME B1.20.1
- Manufacturing facility is ISO 9001:2008
- Fittings meet applicable chemical & physical properties

Fig. S3414C & S3416C - Cap



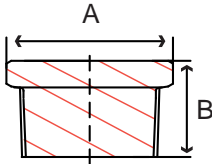
Size IN	Part Number		A IN	B IN	Weight LB
	IN	316			
1/8	S3414C 001	S3416C 001	0.62	0.68	0.05
1/4	S3414C 002	S3416C 002	0.74	0.68	0.07
3/8	S3414C 003	S3416C 003	0.86	0.80	0.09
1/2	S3414C 004	S3416C 004	1.05	0.93	0.1
3/4	S3414C 006	S3416C 006	1.29	1.05	0.4
1	S3414C 010	S3416C 010	1.60	1.35	0.5
1-1/4	S3414C 012	S3416C 012	1.95	1.60	0.6
1-1/2	S3414C 014	S3416C 014	2.15	0.04	0.6
2	S3414C 020	S3416C 020	2.71	1.74	1.2
2-1/2	S3414C 024	S3416C 024	3.32	2.34	3.5
3	S3414C 030	S3416C 030	4.10	2.54	6.2
4	S3414C 040	S3416C 040	5.07	2.65	9.2

Fig. S3414U & S3416U - Union



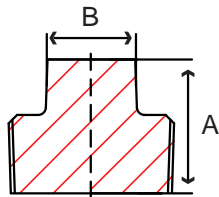
Size IN	Part Number		A IN	B IN	Weight LB
	IN	316			
1/8	S3414U 001	S3416U 001	1.17	1.48	0.2
1/4	S3414U 002	S3416U 002	1.17	1.48	0.2
3/8	S3414U 003	S3416U 003	1.37	1.60	0.3
1/2	S3414U 004	S3416U 004	1.48	1.91	0.4
3/4	S3414U 006	S3416U 006	1.79	1.92	0.6
1	S3414U 010	S3416U 010	2.11	2.34	0.9
1-1/4	S3414U 012	S3416U 012	2.48	2.59	1.3
1-1/2	S3414U 014	S3416U 014	2.96	2.96	2.2
2	S3414U 020	S3416U 020	3.59	3.04	2.9
2-1/2	S3414U 024	S3416U 024	4.46	3.71	5.1
3	S3414U 030	S3416U 030	5.32	4.06	8.4
4	S3414U 040	S3416U 040	6.67	4.37	11.8

Fig. S3414HP & S3416HP - Hex Head Plug



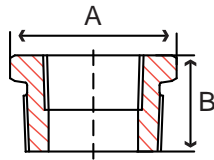
Size IN	Part Number		A IN	B IN	Weight LB
	IN	316			
1/8	S3414HP001	S3416HP001	0.62	0.47	0.02
1/4	S3414HP002	S3416HP002	0.74	0.62	0.07
3/8	S3414HP003	S3416HP003	0.87	0.68	0.1
1/2	S3414HP004	S3416HP004	0.92	0.86	0.1
3/4	S3414HP006	S3416HP006	1.05	1.05	0.2
1	S3414HP010	S3416HP010	1.13	1.37	0.4
1-1/4	S3414HP012	S3416HP012	1.37	1.79	0.9
1-1/2	S3414HP014	S3416HP014	1.44	1.95	1.2
2	S3414HP020	S3416HP020	1.70	2.46	2.2
2-1/2	S3414HP024	S3416HP024	1.79	2.93	2.7
3	S3414HP030	S3416HP030	1.93	3.47	5.6
4	S3414HP040	S3416HP040	2.22	4.58	10.1

Fig. S3414SP & S3416SP - Square Head Plug



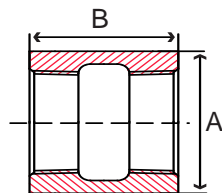
Size IN	Part Number		A IN	B IN	Weight LB
	IN	316			
1/8	S3414SP001	S3416SP001	0.62	0.27	0.02
1/4	S3414SP002	S3416SP002	0.70	0.39	0.04
3/8	S3414SP003	S3416SP003	0.84	0.47	0.07
1/2	S3414SP004	S3416SP004	0.98	0.55	0.1
3/4	S3414SP006	S3416SP006	1.05	0.66	0.2
1	S3414SP010	S3416SP010	1.25	0.82	0.3
1-1/4	S3414SP012	S3416SP012	1.37	0.94	0.5
1-1/2	S3414SP014	S3416SP014	1.44	1.12	0.7
2	S3414SP020	S3416SP020	1.56	1.30	1.1
2-1/2	S3414SP024	S3416SP024	1.79	1.48	2.5
3	S3414SP030	S3416SP030	1.91	1.68	3.9
4	S3414SP040	S3416SP040	2.22	2.48	7.2

Fig. S3414HB & S3416HB - Hex Bushing



Size IN	Part Number		A IN	B IN	Weight LB
	304	316			
1/4 x 1/8	S3414HB002001	S3416HB002001	0.62	0.65	0.07
3/8 x 1/8	S3414HB003001	S3416HB003001	0.68	0.74	0.07
3/8 x 1/4	S3414HB003002	S3416HB003002	0.68	0.74	0.04
1/2 x 1/8	S3414HB004001	S3416HB004001	0.86	0.81	0.1
1/2 x 1/4	S3414HB004002	S3416HB004002	0.86	0.81	0.09
1/2 x 3/8	S3414HB004003	S3416HB004003	0.86	0.81	0.07
3/4 x 1/8	S3414HB006001	S3416HB006001	1.05	0.97	0.2
3/4 x 1/4	S3414HB006002	S3416HB006002	1.05	0.97	0.1
3/4 x 3/8	S3414HB006003	S3416HB006003	1.05	0.97	0.1
3/4 x 1/2	S3414HB006004	S3416HB006004	1.05	0.97	0.1
1 x 1/8	S3414HB010001	S3416HB010001	1.37	1.05	0.3
1 x 1/4	S3414HB010002	S3416HB010002	1.37	1.05	0.3
1 x 3/8	S3414HB010003	S3416HB010003	1.37	1.05	0.3
1 x 1/2	S3414HB010004	S3416HB010004	1.37	1.05	0.2
1 x 3/4	S3414HB010006	S3416HB010006	1.37	1.05	0.1
1-1/4 x 1/8	S3414HB012001	S3416HB012001	1.72	1.15	0.6
1-1/4 x 1/4	S3414HB012002	S3416HB012002	1.72	1.15	0.6
1-1/4 x 3/8	S3414HB012003	S3416HB012003	1.72	1.15	0.6
1-1/4 x 1/2	S3414HB012004	S3416HB012004	1.72	1.15	0.6
1-1/4 x 3/4	S3414HB012006	S3416HB012006	1.72	1.15	0.4
1-1/4 x 1	S3414HB012010	S3416HB012010	1.72	1.15	0.3
1-1/2x1/8	S3414HB014001	S3416HB014001	1.95	1.21	0.9
1-1/2x1/4	S3414HB014002	S3416HB014002	1.95	1.21	0.9
1-1/2x3/8	S3414HB014003	S3416HB014003	1.95	1.21	0.9
1-1/2x1/2	S3414HB014004	S3416HB014004	1.95	1.21	0.8
1-1/2x3/4	S3414HB014006	S3416HB014006	1.95	1.21	0.7
1-1/2x1	S3414HB014010	S3416HB014010	1.95	1.21	0.6
1-1/2x1-1/4	S3414HB014012	S3416HB014012	1.95	1.21	0.3
2x1/4	S3414HB020002	S3416HB020002	2.46	1.37	1.7
2x3/8	S3414HB020003	S3416HB020003	2.46	1.37	1.6
2x1/2	S3414HB020004	S3416HB020004	2.46	1.37	1.6
2x3/4	S3414HB020006	S3416HB020006	2.46	1.37	1.5
2x1	S3414HB020010	S3416HB020010	2.46	1.37	1.3
2x1-1/4	S3414HB020012	S3416HB020012	2.46	1.37	1.0
2x1-1/2	S3414HB020014	S3416HB020014	2.46	1.37	0.8
2-1/2x1/2	S3414HB024004	S3416HB024004	2.93	1.44	2.4
2-1/2x3/4	S3414HB024006	S3416HB024006	2.93	1.44	2.4
2-1/2x1	S3414HB024010	S3416HB024010	2.93	1.44	2.2
2-1/2x1-1/4	S3414HB024012	S3416HB024012	2.93	1.44	2.4
2-1/2x1-1/2	S3414HB024012	S3416HB024012	2.93	1.44	1.6
2-1/2x2	S3414HB024020	S3416HB024020	2.93	1.44	0.9
3x1	S3414HB030010	S3416HB030010	3.47	1.48	3.7
3x1-1/4	S3414HB030012	S3416HB030012	3.47	1.48	4.9
3x1-1/2	S3414HB030014	S3416HB030014	3.47	1.48	2.5
3x2	S3414HB030020	S3416HB030020	3.47	1.48	2.3
3x2-1/2	S3414HB030024	S3416HB030024	3.47	1.48	1.6
4x1	S3414HB040010	S3416HB040010	4.58	1.76	10.5
4x1-1/4	S3414HB040012	S3416HB040012	4.58	1.76	10.2
4x1-1/2	S3414HB040014	S3416HB040014	4.58	1.76	6.9
4x2	S3414HB040020	S3416HB040020	4.58	1.76	6.1
4x2-1/2	S3414HB040024	S3416HB040024	4.58	1.76	5.2
4x3	S3414HB040030	S3416HB040030	4.58	1.76	3.7

Fig. S3414CP & S3416CP - Full Coupling



Size IN	Part Number		A IN	B IN	Weight LB
	304	316			
1/8	S3414CP001	S3416CP001	0.62	0.99	0.07
1/4	S3414CP002	S3416CP002	0.74	0.99	0.09
3/8	S3414CP003	S3416CP003	0.86	1.11	0.1
1/2	S3414CP004	S3416CP004	1.05	1.37	0.2
3/4	S3414CP006	S3416CP006	1.29	1.49	0.2
1	S3414CP010	S3416CP010	1.62	1.61	0.4
1-1/4	S3414CP012	S3416CP012	1.87	1.99	0.5
1-1/2	S3414CP014	S3416CP014	2.16	2.11	0.7
2	S3414CP020	S3416CP020	2.71	1.42	1.4
2-1/2	S3414CP024	S3416CP024	3.38	2.85	2.6
3	S3414CP030	S3416CP030	3.96	3.16	3.8
4	S3414CP040	S3416CP040	5.05	3.67	6.8

BAR STOCK

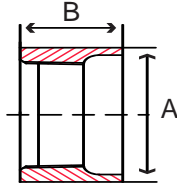


Fig. S3414HC & S3416HC - Half Coupling

Size IN	Part Number		A IN	B IN	Weight LB
	304	316			
1/8	S3414HC001	S3416HC001	0.62	0.50	0.03
1/4	S3414HC002	S3416HC002	0.74	0.56	0.04
3/8	S3414HC003	S3416HC003	0.86	0.56	0.07
1/2	S3414HC004	S3416HC004	1.05	0.70	0.1
3/4	S3414HC006	S3416HC006	1.29	0.74	0.1
1	S3414HC010	S3416HC010	1.62	0.80	0.2
1-1/4	S3414HC012	S3416HC012	1.87	0.99	0.2
1-1/2	S3414HC014	S3416HC014	2.16	1.05	0.3
2	S3414HC020	S3416HC020	2.71	1.25	0.7
2-1/2	S3414HC024	S3416HC024	3.38	1.42	1.3
3	S3414HC030	S3416HC030	3.96	1.58	1.8
4	S3414HC040	S3416HC040	5.05	1.83	3.1

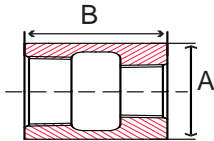
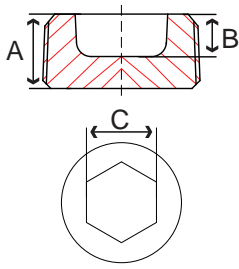


Fig. S3414RC & S3416RC - Reducing Coupling

Size IN	Part Number		A IN	B IN	Weight LB
	304	316			
1/4 x 1/8	S3414RC002001B	S3416RC002001B	0.74	1.12	0.1
3/8 x 1/8	S3414RC003001B	S3416RC003001B	0.86	1.17	0.1
3/8 x 1/4	S3414RC003002B	S3416RC003002B	0.86	1.17	0.1
1/2 x 1/8	S3414RC004001B	S3416RC004001B	1.05	1.49	0.2
1/2 x 1/4	S3414RC004002B	S3416RC004002B	1.05	1.49	0.2
1/2 x 3/8	S3414RC004003B	S3416RC004003B	1.05	1.49	0.2
3/4 x 1/8	S3414RC006001B	S3416RC006001B	1.29	1.55	0.7
3/4 x 1/4	S3414RC006002B	S3416RC006002B	1.29	1.55	0.3
3/4 x 3/8	S3414RC006003B	S3416RC006003B	1.29	1.55	0.3
3/4 x 1/2	S3414RC006004B	S3416RC006004B	1.29	1.55	0.3
1 x 1/8	S3414RC010001B	S3416RC010001B	1.64	1.72	0.8
1 x 1/4	S3414RC010002B	S3416RC010002B	1.64	1.72	0.6
1 x 3/8	S3414RC010003B	S3416RC010003B	1.64	1.72	0.6
1 x 1/2	S3414RC010004B	S3416RC010004B	1.64	1.72	0.5
1 x 3/4	S3414RC010006B	S3416RC010006B	1.64	1.72	0.5
1-1/4 x 1/8	S3414RC012001B	S3416RC012001B	1.95	1.98	1.1
1-1/4 x 1/4	S3414RC012002B	S3416RC012002B	1.95	1.98	1.1
1-1/4 x 3/8	S3414RC012003B	S3416RC012003B	1.95	1.98	1.1
1-1/4 x 1/2	S3414RC012004B	S3416RC012004B	1.95	1.98	1.0
1-1/4 x 3/4	S3414RC012006B	S3416RC012006B	1.95	1.98	0.9
1-1/4 x 1	S3414RC012010B	S3416RC012010B	1.95	1.98	0.9
1-1/2 x 1/8	S3414RC014001B	S3416RC014001B	2.15	2.10	1.3
1-1/2 x 1/4	S3414RC014002B	S3416RC014002B	2.15	2.10	1.4
1-1/2 x 3/8	S3414RC014003B	S3416RC014003B	2.15	2.10	1.2
1-1/2 x 1/2	S3414RC014004B	S3416RC014004B	2.15	2.10	1.2
1-1/2 x 3/4	S3414RC014006B	S3416RC014006B	2.15	2.10	1.1
1-1/2 x 1	S3414RC014010B	S3416RC014010B	2.15	2.10	1.0
1-1/2 x 1-1/4	S3414RC014012B	S3416RC014012B	2.15	2.10	0.8
2 x 3/8	S3414RC020003B	S3416RC020003B	2.71	2.48	2.6
2 x 1/2	S3414RC020004B	S3416RC020004B	2.71	2.48	2.5
2 x 3/4	S3414RC020006B	S3416RC020006B	2.71	2.48	2.4
2 x 1	S3414RC020010B	S3416RC020010B	2.71	2.48	2.3
2 x 1-1/4	S3414RC020012B	S3416RC020012B	2.71	2.48	2.0
2 x 1-1/2	S3414RC020014B	S3416RC020014B	2.71	2.48	1.8
2-1/2 x 1-1/2	S3414RC024014B	S3416RC024014B	3.32	3.24	5.1
2-1/2 x 2	S3414RC024020B	S3416RC024020B	3.32	3.24	3.5
3 x 1	S3414RC030010B	S3416RC030010B	4.10	3.63	8.8
3 x 1-1/2	S3414RC030014B	S3416RC030014B	4.10	3.63	7.9
3 x 2	S3414RC030020B	S3416RC030020B	4.10	3.63	7.5
3 x 2-1/2	S3414RC030024B	S3416RC030024B	4.10	3.63	6.5
4 x 2	S3414RC040020B	S3416RC040020B	5.07	4.33	14.5
4 x 3	S3414RC040030B	S3416RC040030B	5.07	4.33	15.6

Fig. S3514CH & S3516CH - Short Counter Sunk Hex Plug



Size IN	Part Number		A IN	B IN	C IN	Weight LB
	304	316				
1/16	S3514CH000	S3516CH000	0.25	0.15	0.09	0.006
1/8	S3514CH001	S3516CH001	0.26	0.18	0.09	0.01
1/4	S3514CH002	S3516CH002	0.39	0.25	0.16	0.02
3/8	S3514CH003	S3516CH003	0.39	0.31	0.16	0.03
1/2	S3514CH004	S3516CH004	0.52	0.37	0.19	0.06
3/4	S3514CH006	S3516CH006	0.53	0.56	0.19	0.08
1	S3514CH010	S3516CH010	0.67	0.62	0.25	0.2
1-1/4	S3514CH012	S3516CH012	0.69	0.75	0.37	0.3
1-1/2	S3514CH014	S3516CH014	0.80	1.00	0.37	0.4
2	S3514CH020	S3516CH020	0.87	1.00	0.37	0.9