



COOPLOK™ Grooved Submittal

**Fig. 65SR & 66SR
Standard Weight Rigid Coupling**

Figure 65SR & 66SR Standard Weight Rigid couplings are designed for use in piping systems when rigid piping connections are desired. The angle-pad design allows the coupling housing to slide when tightened. This provides offset clamping that creates a rigid joint resistant to flexural and torsional loads.



Material Specifications

Housing:

Ductile Iron Housings conform to ASTM A-536, Grade 65-45-12

Coating:

- Orange Paint (Rust inhibiting) - Standard Coating – Fig 65SR
- Hot Dipped Galvanized conforming to ASTM A-153 – Fig 66SR

Coupling Gaskets:

- Pre-lubricated Grade E-EPDM (Green Stripe)
-30°F (-34°C) to +230°F (+110°C) Service Temperature Range
For use with water service, diluted acids, alkali solutions, oil-free air and other chemical services. NOT FOR PETROLEUM, STEAM, or NATURAL GAS APPLICATIONS.
- Grade T-Nitrile (Orange Stripe)
-20°F (-29°C) to +180°F (+82°C) Service Temperature Range
For use with petroleum applications, vegetable & mineral oils, and air with oil vapors. NOT FOR USE IN HOT WATER, STEAM, or NATURAL GAS APPLICATIONS.
- Other: _____

Nuts and Bolts:

Zinc electroplated, heat treated, oval neck track head bolts conforming to ASTM 183 Grade 2 with a minimum tensile strength of 110,000psi; Heavy hex nuts made of carbon steel conforming to ASTM A-563 Grade A or Grade B, or J995 Grade 2.

SCI Track Bolts are 100% Magnetic Particle Inspected
The SCI logo appears on all COOPLOK™ track bolts.

Project Information	
Project /Job:	System:
Date:	
Engineer/Architect:	
Contractor:	
Address:	
Notes:	



1000 Series Standard Weight Rigid Couplings

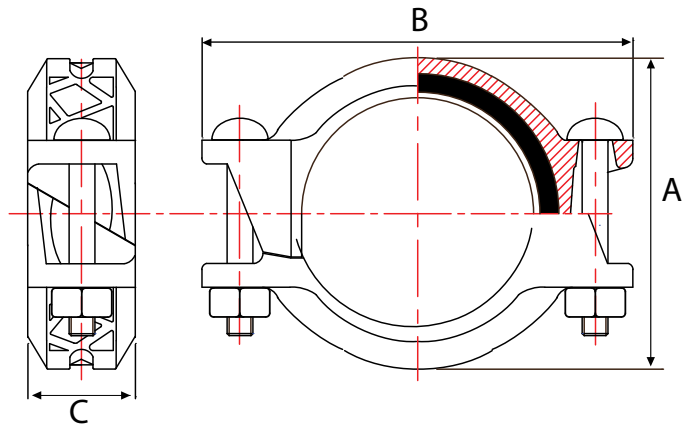


Fig. 65SR & 66SR – Standard Weight Rigid Couplings

Pipe Size IN / mm	Part Number		Pipe OD IN / mm	Max Pipe End Gap IN / mm	Max Working Pressure PSI / bar	Dimensions			Bolt Size IN / mm	Weight LB / kg
	Painted	Galv				A IN / mm	B IN / mm	C IN / mm		
1 25	65SR3010	66SR3010	1.315 33.7	1/16 1.6	1000 68.9	2.34 59.5	3.86 98	1.73 44	3/8 x 2 M10 x 52	1.6 0.7
1-1/4 32	65SR3012	66SR3012	1.660 42.4	1/16 1.6	1000 68.9	2.74 69.5	4.25 108	1.85 47	3/8 x 2 M10 x 52	1.6 0.7
1-1/2 40	65SR3014	66SR3014	1.900 48.3	1/16 1.6	1000 68.9	2.97 75.5	4.49 114	1.85 47	3/8 x 2 M10 x 52	1.6 0.7
2 50	65SR3020	66SR3020	2.375 60.3	1/16 1.6	1000 68.9	3.48 88.5	4.88 124	1.89 48	3/8 x 2-1/2 M10 x 60	2.3 1.0
2-1/2 65	65SR3024	66SR3024	2.875 73	1/16 1.6	1000 68.9	4.00 101.5	5.79 147	1.89 48	1/2 x 3-1/4 M12 x 80	2.6 1.2
3 88.9	65SR3030	66SR3030	3.500 88.9	1/16 1.6	1000 68.9	4.59 116.5	6.38 162	1.85 47	1/2 x 3-1/4 M12 x 80	3.0 1.4
4 100	65SR3040	66SR3040	4.500 114.3	1/8 3.2	1000 68.9	5.87 149	7.72 196	2.09 53	1/2 x 3-1/4 M12 x 80	5.3 2.4
5 125	65SR3050	66SR3050	5.563 141.3	1/8 3.2	1000 68.9	6.95 176.5	9.29 236	2.09 53	5/8 x 3-3/4 M16 x 95	7.4 3.4
6 150	65SR3060	66SR3060	6.625 168.3	1/8 3.2	1000 68.9	8.15 207	10.55 268	2.09 53	5/8 x 4 M16 x 100	8.3 3.8
8 200	65SR3080	66SR3080	8.625 219.1	1/8 3.2	600 41.3	10.24 260	13.23 336	2.56 65	3/4 x 4-1/2 M19 x 110	15.1 6.8
10 254	65SR3100	66SR3100	10.750 273.0	1/8 3.2	600 41.3	12.71 323	15.82 402	2.56 65	7/8 x 5-1/4 M23 x 130	24.8 11.3
12 305	65SR3120	66SR3120	12.750 323.9	1/8 3.2	600 41.3	14.92 379	18.03 458	2.56 65	7/8 x 5-1/4 M23 x 130	29.9 13.5
14 350	65SR3140	66SR3140	14.000 355.6	1/8 3.2	360 24.8	16.02 407	19.45 494	2.87 73	7/8 x 5-1/4* M23 x 130	32.8 14.9

NOTES:

1. All bolts and gaskets identified by SCI logo.
2. 100% Magnetic particle inspection of each bolt. Each bolt has a minimum tensile strength of 110,000 psi.
3. Gaskets are pre-lubricated.
4. Gasket Grade E EPDM (green stripe):
 - Temperature range: -30°F (-34°C) to +230°F (+110°C).
5. Gasket Grade T Nitrile (orange stripe):
 - Temperature range: -20°F (-29°C) to +180°F (+82°C).

Torque Requirements for Bolts (ft./lbs)

Coupling Size	Fig. 65SR & Fig. 66SR	
1"	30	
1-1/4" - 1-1/2"	30	
2" - 2-1/2"	30	
3" - 4"	90	30 ft./lbs. = 40 N/M
5" - 6"	150	50 ft./lbs. = 67 N/M
8"	200	90 ft./lbs. = 121 N/M 150 ft./lbs. = 202 N/M

